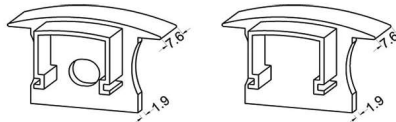
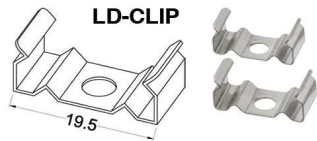
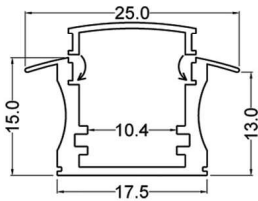


LD-TRK-LPB1-3 - recessed mounting extrusion



LD-TRK-LPB1-3 - 3M (118.11") - designed for recessed mounting
LCUT-LPB1 - designed for recessed mounting, cut to exact length and mitre
LD-LPB1-EC - plastic end caps sold in pairs, friction fit
LD-CLIP - metal mounting clip sold in pairs (screws not included)



Recessed mounting extrusion

Height 15MM
Width/Length 17.5MM/25MM

No. of Bulbs LED tape

Body Material Aluminum
Finish/Color Silver Anodized Aluminum
Type of Finish Anodized

Rated For Voltage Dry Location
 12-24V

Approval Warranty cUL or equivalent
 1 Year
Instal Position Any

Date:	Notes:
Fixture Type:	
Job Name:	



Lighting • LED • Shades • Custom Designs

TORONTO | BUFFALO | LIGHTFAIR | DALLAS MARKET CENTRE

www.dainolite.com

1-888-564-1262

dainolite@dainolite.com

[/dainolite](https://www.facebook.com/dainolite)

[/dainoliteld](https://www.tumblr.com/dainoliteld)

[/dainolite](https://www.instagram.com/dainolite)

